

# dragon.PDA

## Advanced PLC data acquisition and structured data archiving

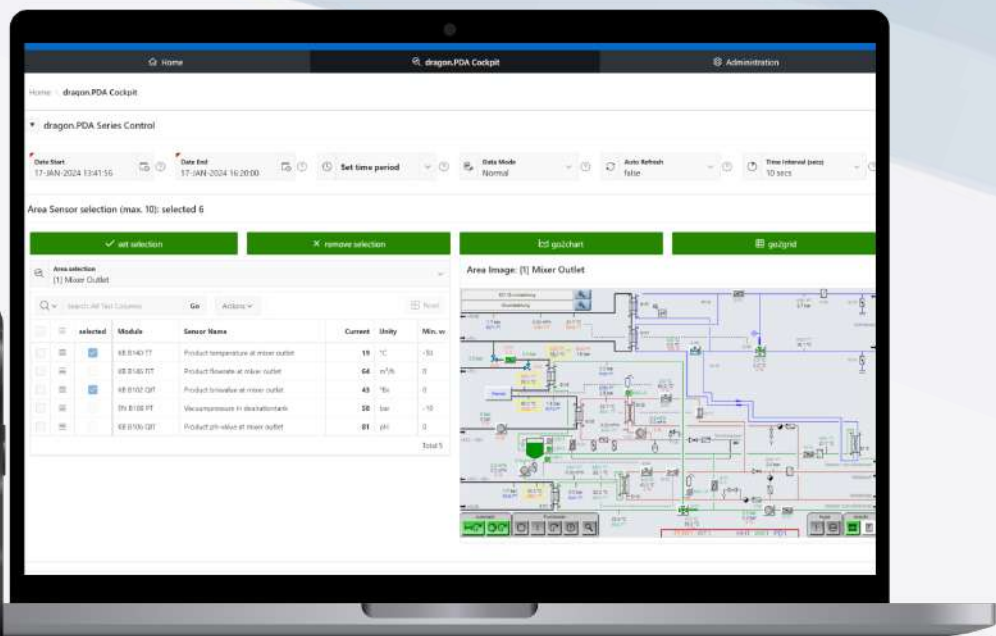
dragon.PDA stands for a robust solution for seamless **data archiving** and **dynamic graphical representation** of user-defined measuring points.

This innovative platform empowers users with the flexibility to establish versatile relationships by combining different measurement points, enabling a comprehensive and customized approach to data analysis. With a wide range of functions, dragon.PDA ensures fast analysis while strictly complying with the requirements of long-term data archiving.

Take your data management to a new level with an impressive tool that goes beyond simply archiving information and becomes a source of deep insight and strategic decision-making.



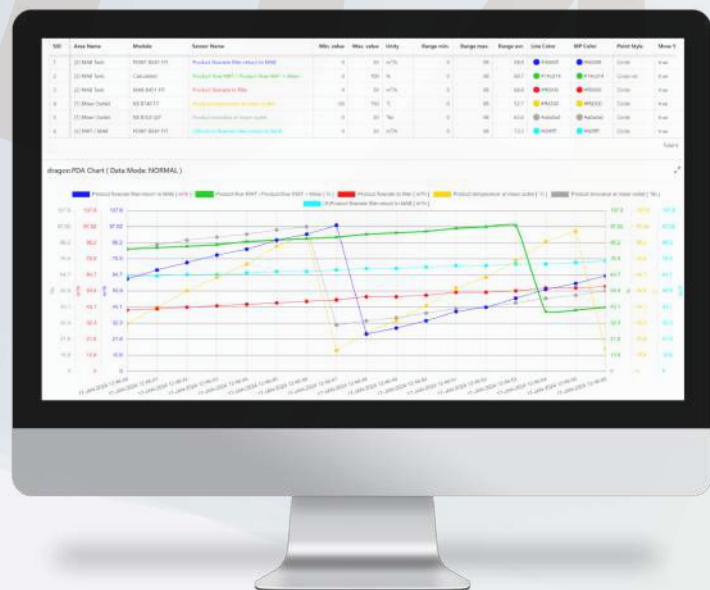
[Read More](#)



Empowering Precision, Unleashing Insights.

## Features:

- **Responsive design:** Ensures seamless usability on different devices.
- **Change-sensitive fields with automatic saving:** Enables efficient operation by automatically saving changes.
- **Up to 10 selectable simultaneous process curves for graphical analysis:** Enables comprehensive visualization of data.
- **Multi-PLC support:** Compatibility with a wide range of PLCs, including models S7-300 to S7-1500.
- **Customizable visual functions:** Extensive options for users to customize visual representations to your liking.
- **Accurate or interpolated display of analyzed data:** Provides a precise data representation that increases accuracy.
- **Two data modes available:** Choice of Normal and Historical modes available based on analytical requirements.
- **Data export functions:** Seamlessly export data to Excel, Word or PDF format for further analysis or reporting.
- **Comprehensive direct help:** Embedded PDF help document provides comprehensive support for all fields and ensures user adoption.
- **Customizable tooltips and auto-refresh functionality:** Improves user experience with customizable tooltips and automatic data refresh
- **Chart zoom and adjustable height:** Allows users to zoom into charts and adjust the height for multi-resolution use.
- **Configurable chart lines, switchable Y-axes and legends:** Provides flexibility in chart customization.
- **Automatic data backup:** Ensures data integrity and security through automatic backup mechanisms.
- **Preconfigured systems available:** Simplify deployment with pre-configured systems with scalable manage.it dragon.PDA appliances.



## Contact Information:

Have questions? Feel free to contact us.

**manage.it GmbH & Co. KG**